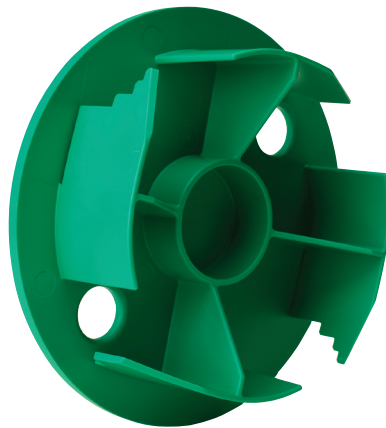




# MacLean™ HIGHLINE

*Replacing access box lids can be a hassle. But now, there's no need to guess what brand that buried box is, or worse yet, dig it up to find out! The locking system of MACLEAN HIGHLINE's truly universal 6-inch lid is "stepped" to fit most competitors' valve boxes, so it reduces inventory and the need to order from more than one vendor. Saves time and money.*

*Exclusive 10-Year Guarantee – if it fails within ten years of the purchase date, your local MACLEAN HIGHLINE distributor will replace it free of charge.*



## UNIVERSAL 6" ECONO LIDS

### FEATURES:

- Constructed of recycled, environmentally-friendly SUPERFLEXON
- Stepped locking system
- T-Top design
- Exclusive 10-Year Guarantee
- Available in green, black, brown mulch and purple

### BENEFITS:

- Fits all 6- to 7-inch round boxes
- Only one replacement lid required for all replacement requests
- Reduces inventory / ordering
- Easily interchangeable and easy to install—just turn clockwise and pull
- Saves time and money
- Greater top-load strength than lids made of structural foam
- More UV- and wear-resistant than structural foam
- T-Top design minimizes dirt in box

### APPLICATIONS:

- Residential
- Commercial

**"You're Covered!"**



# UNIVERSAL 6" ECONO LIDS

## DESCRIPTION

## PART #

### LIDS ONLY

#### Control Valve

|   |        |
|---|--------|
| Green "Valve Box" Universal Econo Lid       | 182013 |
| Black "Valve Box" Universal Econo Lid       | 182015 |
| Brown Mulch "Valve Box" Universal Econo Lid | 182017 |

#### Reclaimed Water

|  |        |
|--|--------|
| Purple "Reclaimed Water" Universal Econo Lid | 182016 |
|--|--------|

#### Electric

|                                      |        |
|--------------------------------------|--------|
| Green "Electric" Universal Econo Lid | 182020 |
| Black "Electric" Universal Econo Lid | 182018 |

#### Cable TV

|                                  |        |
|----------------------------------|--------|
| Green "CATV" Universal Econo Lid | 182014 |
|----------------------------------|--------|

#### Blank

|                           |        |
|---------------------------|--------|
| Black Universal Econo Lid | 182019 |
|---------------------------|--------|

## SUPERFLEXON BOXES AND COVERS

SUPERFLEXON is a plastic material made of a rigid combination of polyolefin and fibrous inorganic components. It is chemically inert and normally unaffected by moisture, corrosion and the effects of temperature changes. SUPERFLEXON also has a high tensile strength with light weight because it is a solid (not foamed) structural material.

SUPERFLEXON covers are NOT traffic covers and should not be used in roadways, etc.

### Physical Properties

|                                   | ASTM Test Method | Minimum Test Value |
|-----------------------------------|------------------|--------------------|
| Tensile Strength (2.0"/min.)      | D-638-82a        | 3,400 psi          |
| Flexural Modulus                  | D-790-81         | 191,000 psi        |
| Compressive Strength (0.05"/min.) | D-695-80         | 3,350 psi          |
| Impact Strength, Izod             | D-256-81         | 0.6 ft. lb/in.     |
| Durometer Hardness, Type D        | D-2240-81        | 60                 |
| Deflection Temp. @ 66 psi Stress  | D-648-82         | 230°F              |
| Specific Gravity                  | D-792-66 (1979)  | 1.15               |



481 Munn Road, Suite 300, Fort Mill, SC 29715, USA  
 Phone: 803.628.4380 • Fax: 803.792.4612  
 E-mail: info@macleanhighline.com  
 www.highlineaccessboxes.com